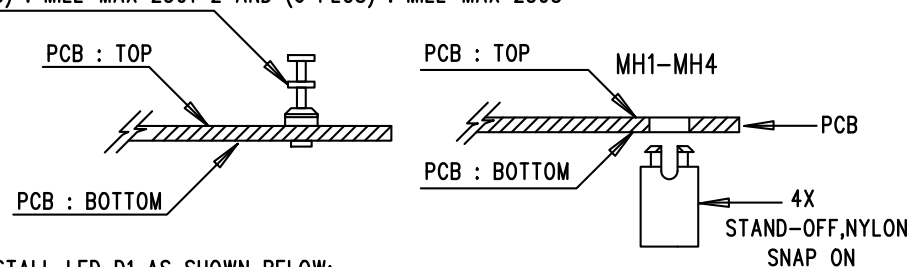


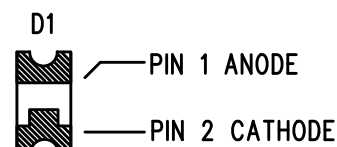
REVISION HISTORY				
ECO	REV	DESCRIPTION	APPR	DATE
-	1	PRODUCTION FAB	GEORGE B.	09-15-11

NOTES: UNLESS OTHERWISE SPECIFIED

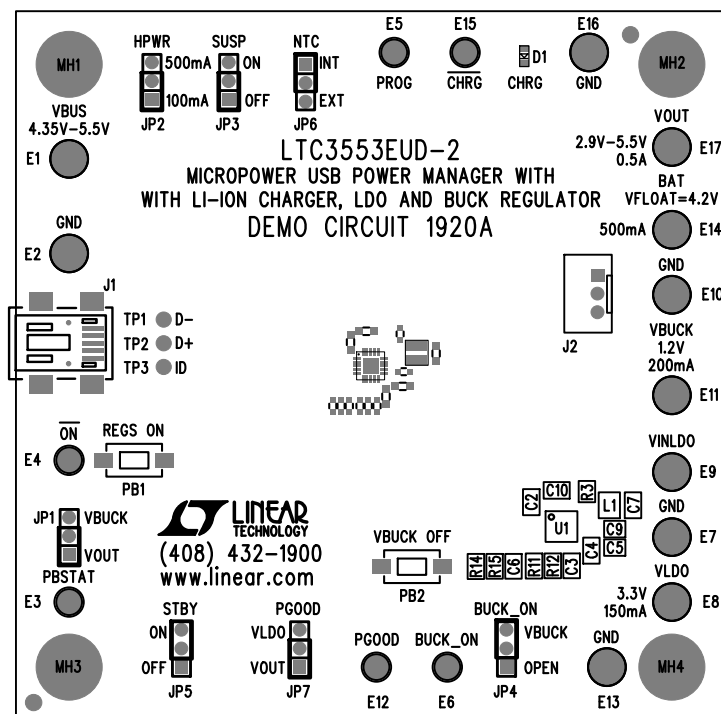
1. WORKMANSHIP SHALL BE IN ACCORDANCE WITH IPC-A-610.
2. ASSEMBLY PROCESS SHALL INCLUDE: REFLOW SOLDER TOP SIDE SMD. MAXIMUM SOLDER TEMPERATURE IS 240 DEGREES CELSIUS.
3. PARTS TO OMIT WILL BE SPECIFIED ON THE BILL OF MATERIALS. LOCATIONS OF OMITTED PARTS SHALL BE FREE OF SOLDER. MASK THE SOLDER STENCIL WHERE SMT PARTS ARE OMITTED.
4. INSTALL SHUNTS AS SHOWN ON ASSY DRAWING.
5. DEPANELIZE BOARDS AFTER ASSEMBLY AND ROUTE-OUT THE BREAKOUT TABS ON FOUR SIDES OF THE BOARD EDGE.
6. DO NOT APPLY ANY KIND OF ASSEMBLY STAMP OR QA STAMP TO ANY BOARD.
7. INSTALL TURRETS AND 4 STANDOFFS AS SHOWN BELOW:
(11 PLCS) : MILL-MAX 2501-2 AND (6 PLCS) : MILL-MAX 2308



8. INSTALL LED D1 AS SHOWN BELOW:



BOTTOM VIEW



APPROVALS

PCB DES. NC
APP ENG. GEORGE B.



1630 MCCARTHY BLVD
MILPITAS, CA 95035
PH: (408)432-1900
LTC CONFIDENTIAL-
FOR CUSTOMER USE ONLY

TITLE: TOP ASSEMBLY DRAWING:
MICROPOWER USB POWER MANAGER WITH
LI-ION CHARGER, LDO AND BUCK REGULATOR

SIZE N/A IC NO. LTC3553EUD-2
DEMO CIRCUIT 1920A REV. 1

SCALE = NONE

FILENAME: DC1920A-1.PCB

SHT 1 of 2